

Parking Ticket/Jewelry Envelope

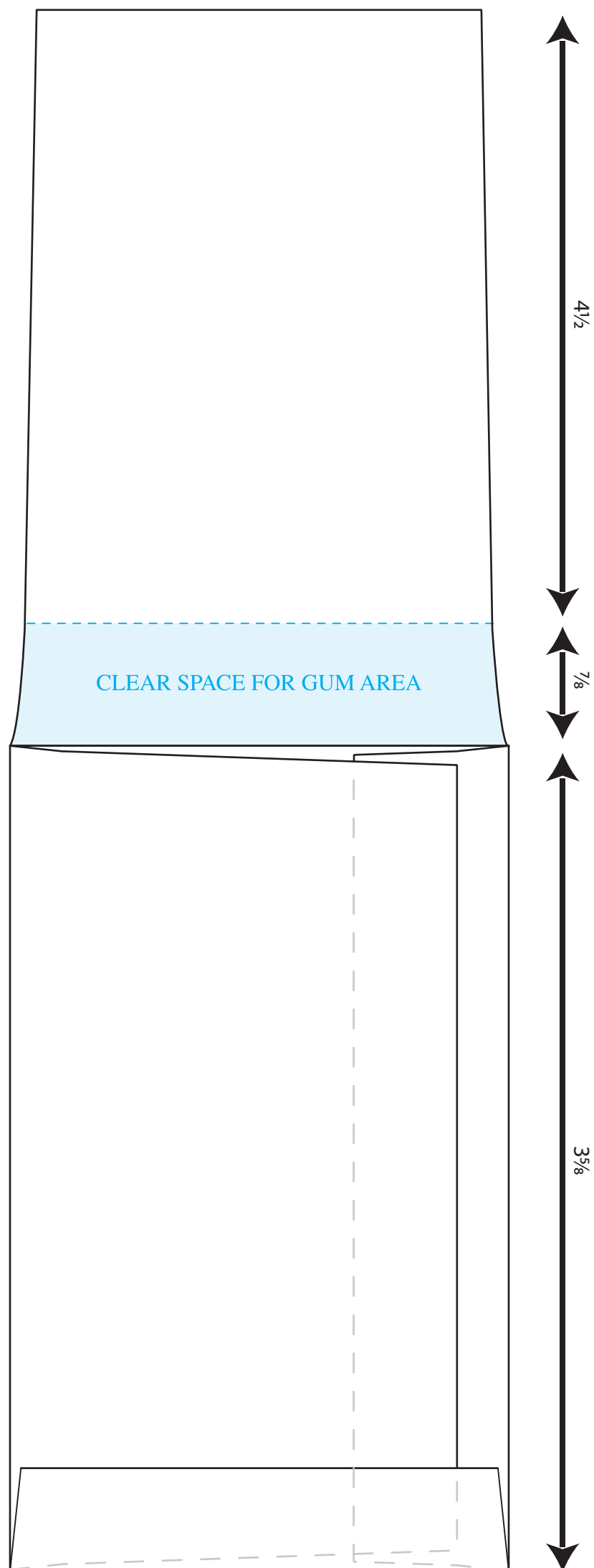
Product Number **4340**

Envelope size: $3\frac{5}{8}$ " x 6"

Receipt Flap: $3\frac{3}{8}$ " x $4\frac{1}{2}$ "

Ext. Sealed Pocket: $3\frac{9}{16}$ " x $6\frac{7}{8}$ "

*This dieline requires an 11x17 sheet
in order to be printed at 100%*



INSIDE

For flat-sheet printing, please contact customer service for dielines.

Parking Ticket/Jewelry Envelope

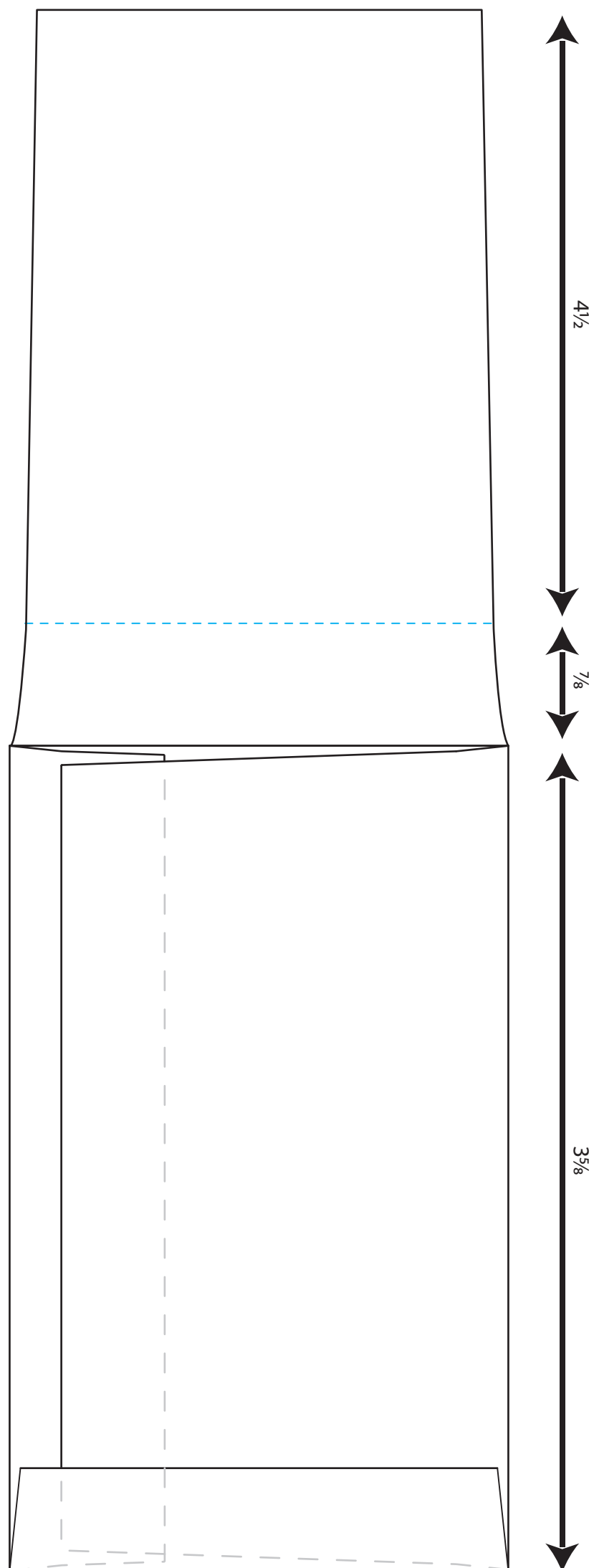
Product Number 4340

Envelope size: 3⁵/₈" x 6"

Receipt Flap: 3³/₈" x 4¹/₂"

Ext. Sealed Pocket: 3⁹/₁₆" x 6⁷/₈"

*This dieline requires an 11x17 sheet
in order to be printed at 100%*



OUTSIDE

For flat-sheet printing, please contact customer service for dielines.