

Parking Ticket/Jewelry Envelope

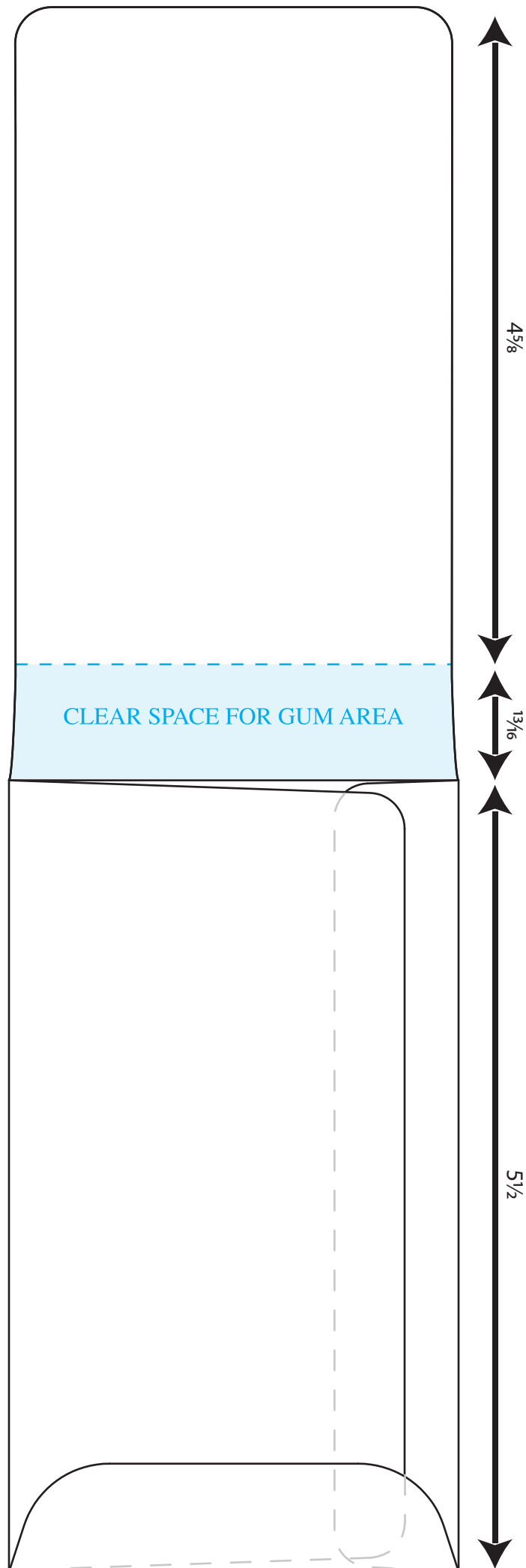
Prod. No. **4162**

Envelope size: 3 1/8" x 5 1/2"

Receipt Flap: 3 1/16" x 4 5/8"

Ext. Sealed Pocket: 3 1/8" x 6 5/16"

*This dieline requires an 11x17 sheet
in order to be printed at 100%*



INSIDE

For flat-sheet printing, please contact customer service for dielines.

Parking Ticket/Jewelry Envelope

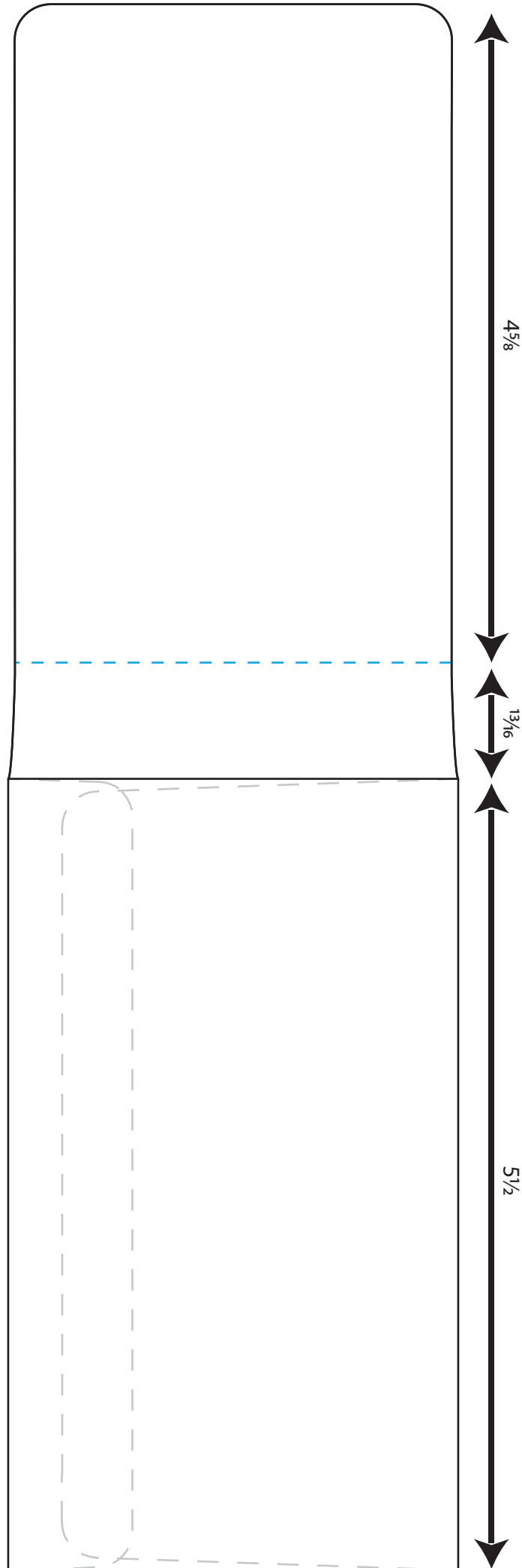
Prod. No. **4162**

Envelope size: $3\frac{1}{8}$ " x $5\frac{1}{2}$ "

Receipt Flap: $3\frac{1}{16}$ " x $4\frac{5}{8}$ "

Ext. Sealed Pocket: $3\frac{1}{8}$ " x $6\frac{5}{16}$ "

*This dieline requires an 11x17 sheet
in order to be printed at 100%*



OUTSIDE

For flat-sheet printing, please contact customer service for dielines.